



Tenas Project

Public Consultation Report #2

April 2022

VERSION 1.0

Submitted to:	BC Environmental Assessment Office
Pursuant to:	<i>Environmental Assessment Act</i> , S.B.C. 2002, c.43
Submitted by:	Telkwa Coal Limited Suite 1410 – 409 Granville Street Vancouver, BC V6C 1T2

Tenas Project

TABLE OF CONTENTS

Table of Contents	i
List of Figures.....	i
List of Tables.....	i
List of Appendices.....	ii
Abbreviations and Acronyms	iii
Units of Measure	iii
1. Introduction	1
1.1 Project Overview	1
1.2 Proponent Information	3
1.3 Public Consultation Area.....	3
1.4 Identifying Interested Parties	5
1.4.1 Local and Regional Governments.....	5
1.4.2 Other Stakeholder Groups	6
2. Purpose	7
2.1 Purpose of Public Consultation	7
2.2 Purpose of the Public Consultation Report	8
3. Phases of Public Consultation	8
3.1 Pre-Application Phase	9
3.1.1 Ongoing General Engagement Activities	10
3.1.2 Tenas Mine Neighbours Group	12
3.1.3 Information Program	13
4. Summary of Key Issues and Concerns Raised During Public Consultation.....	13
5. Next Steps.....	14
5.1 Application Review Phase	14
6. References.....	16

LIST OF FIGURES

Figure 1: Tenas Project Location	2
Figure 2: Project Location and Public Consultation Area	4

LIST OF TABLES

Table 1: Background on Local and Regional Government.....	5
---	---

Table 2:	Overview of Telkwa Coal Limited (TCL)'s Phases Approach to Public Consultation and Engagement	8
Table 3:	Stakeholder Groups contacted in April 2021	11
Table 4:	Summary of Public Issues and Concerns Raised During Public Consultation and Telkwa Coal Limited's (TCL's) Responses, July 24, 2020 to February 22, 2022	13

LIST OF APPENDICES

Appendix A	Interested Parties
Appendix B	Newsletter

ABBREVIATIONS AND ACRONYMS

Abbreviation or Acronym	Long Form of Abbreviation or Acronym
AIR	Application Information Requirements
ACL	Allegiance Coal Limited
BC	British Columbia
BC EAO	British Columbia Environmental Assessment Office
EA	environmental assessment
EAA	<i>Environmental Assessment Act</i> , SBC 2002, c 43
EAC	Environmental Assessment Certificate
EPIC	Electronic Project Information Centre
LOM	life-of-mine
OW	Office of the Wet'suwet'en
PAMP	Public Access Management Plan (S13.0-C14)
Project	Tenas Project
RDBN	Regional District of Bulkley-Nechako
TCL	Telkwa Coal Limited

UNITS OF MEASURE

Abbreviation or Acronym	Long Form of Abbreviation or Acronym
%	percent
km	kilometre
km ²	square kilometre

1. INTRODUCTION

1.1 Project Overview

Telkwa Coal Limited (TCL) is proposing to develop the Tenas Project (Project), which is a metallurgical surface coal mine in northwestern British Columbia (BC), Canada that will recover metallurgical coal for export to the seaborne market. The Project will produce metallurgical coal at an annual production rate of between 775,000 and 825,000 metric tonnes of processed coal with a maximum daily production rate of 2,500 metric tonnes of processed coal per day. The life-of-mine (LOM) is approximately 26.5 years, including the Construction, Operation, and Decommissioning and Reclamation phases.

The Project is located approximately twenty-five (25) kilometres (km) south of the Town of Smithers and seven (7) km southwest of the Village of Telkwa. The Project will be constructed on provincial Crown land, and private land held by TCL. The Project is located outside of the municipal boundary of Telkwa and within Electoral Area A of the Regional District of Bulkley-Nechako (RDBN) (**Figure 1**). The Project is within Wet'suwet'en traditional territory, and TCL acknowledges and respects the unceded rights, title, interests, culture, and aspirations of the Wet'suwet'en to 22,000 square kilometres (km²) of traditional territory. A separate Indigenous Consultation and Engagement Report has been prepared that summarizes TCL's consultation and engagement efforts with the Office of the Wet'suwet'en (OW), and other Indigenous groups, in accordance with the approved Indigenous Consultation and Engagement Plan.

Under Part 3, Section 8 of the Reviewable Projects Regulation for the BC *Environmental Assessment Act*, SBC 2002, c 43 (Government of British Columbia 2002) (*EAA*), the Project triggered an environmental assessment (EA), as its proposed production rate is above the 250,000 tonnes per year threshold. This report is intended to fulfill the requirements outlined in Section 16.0 of the Section 11 Order issued by the BC Environmental Assessment Office (BC EAO) on June 25, 2019 under the *EAA* to prepare a report consistent with the approved Public Consultation Plan (TCL 2019). The present report covers the time period from July 24, 2020 to February 22, 2022.



1.2 Proponent Information

TCL is a joint venture partnership of Allegiance Coal Limited (ACL) and the Itochu Corporation. ACL is a publicly listed company on the Australia stock exchange (ASX: AHQ) with headquarters in Sydney, Australia. In addition to the Project, ACL owns two (2) other projects located in central Queensland, Australia: the Kilmain, and Back Creek Projects, one (1) operating mine located in Colorado, in the United States of America (USA) called the New Elk Coal Mine, and one (1) operating mine located in Alabama, in the USA called the Black Warrior Mineral Mine and one (1) project called the Short Creek Underground Project. The Project is currently Allegiance's flagship project. ACL does not own or operate any other projects or mines in BC. ACL currently owns 90 percent (%) of the Project with ITOCHU owning the remaining 10%.

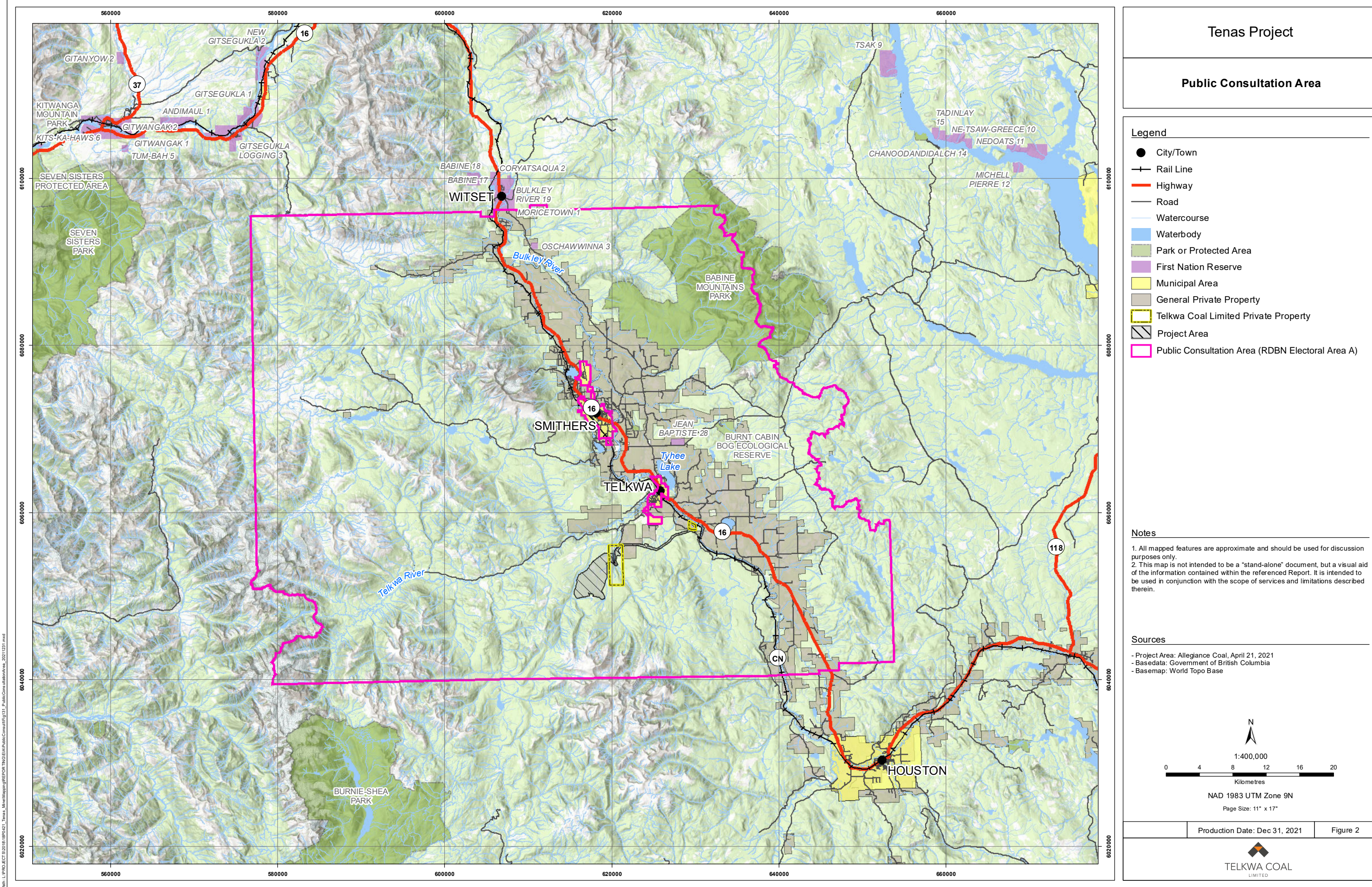
TCL has offices in both Telkwa and Vancouver, BC. The company was registered in BC on September 10, 2014 (BC1013154). The ACL website is: <http://www.allegiancecoal.com.au>, while TCL's website is <http://www.telkwacoal.com>.

The single point of contact for all communication related to the Project's EA and permitting is:

Dan Farmer, P.Eng. Chief Operating Officer
Telkwa Coal Limited
Suite 1410 - 409 Granville Street
Vancouver, BC V6C 1T1
Cell: (604) 220-5703
Email: dfarmer@allegiancecoal.com.au

1.3 Public Consultation Area

The public consultation area was identified to include local municipalities and the regional district (e.g., Village of Telkwa, Town of Smithers, District of Houston, and the Electoral Area A of the RDBN) (**Figure 2**), and residents and community interest groups of the Bulkley Valley.



1.4 Identifying Interested Parties

Since February 2017, TCL has engaged with community members and parties interested or potentially affected by the Project, either directly or indirectly. These parties were identified based on the following criteria:

- ▶ Input from local Project consultants, local and regional government officials, community interest groups, and individual residents of the Bulkley Valley;
- ▶ Interested parties previously consulted on similar Projects in the area; and
- ▶ Information gathered from local meetings, open houses, and information sessions.

The identified parties include local and regional government; residents (e.g., residents of local communities); recreation groups (e.g., hikers, campers, hunters, and anglers); community interest groups; and those with commercial interests (e.g., forestry, trappers, and guide outfitters). A list of interested parties identified to date is provided in **Appendix A**. The list is not intended to be an exhaustive record of all potential interested parties. It is intended to provide an understanding of the groups that are in proximity to the proposed Project, may have an interest in the Project, and may have been previously consulted on similar projects in the area.

As the Project progresses, additional parties may be identified. In addition, TCL will ensure that the public is aware of the Project through regular consultation activities and opportunities for feedback (e.g., social media and advertisements in local newspapers).

TCL is committed to creating and maintaining opportunities for constructive dialogue and relationships with Indigenous groups to develop the Project responsibly. TCL is focused on working with Indigenous groups throughout all phases of the Project, from Project planning and development through the Post-closure Phase. TCL will report on engagement activities with Indigenous groups separately, however, there is potential overlap between community and Indigenous engagement (i.e., there may be Indigenous attendance at open houses and other community and industry events TCL hosts or participates in).

1.4.1 Local and Regional Governments

Based on the location of the Project, the local and regional governments were identified for consultation and engagement activities. See **Table 1** below.

Table 1: Background on Local and Regional Government

Local and Regional Government	Background
Village of Telkwa	<ul style="list-style-type: none"> ▪ The Village of Telkwa is located approximately seven (7) km northeast of the Project. Telkwa had a population of 1,327 in 2016, and its labour force is dominated by employment associated with trades and sales, with more than 80% of residents travelling to Smithers or Houston for work. ▪ The governing council of Telkwa is comprised of a Mayor and four (4) Councillors. ▪ Key Project interests identified during early engagement activities include potential effects to water, dust, noise, traffic, housing, and economic impacts. TCL has engaged with the Village of Telkwa since the spring 2017.
Town of Smithers	<ul style="list-style-type: none"> ▪ The Town of Smithers is located 25 km north of the Project. Smithers had a population of 5,401 in 2016.

Local and Regional Government	Background
	<ul style="list-style-type: none"> ▪ The governing council of Smithers is comprised of a Mayor and six (6) Councillors. ▪ Key Project interests identified during early engagement activities include potential effects to water, noise, traffic, fish, and economic impacts. ▪ TCL has engaged with the Town of Smithers since spring 2018.
Regional District of Bulkley-Nechako (RBDN)	<ul style="list-style-type: none"> ▪ The RBDN is in northwest BC, spanning 73,419 km². The RBDN is situated in between Prince George and Prince Rupert, and includes seven Electoral Areas, representing the rural areas of Smithers (A), Burns Lake (B), Fort St. James (C), Fraser Lake (D), Francois/Ootsa (E), Vanderhoof (F), and Houston (G). The Project is located within RBDN Electoral Area A, the most populated Electoral Area in the RBDN with 5,256 people. Electoral Area A represents the rural areas surrounding Smithers and Telkwa. ▪ Key Project interests identified during early engagement activities include potential effects to water, noise, dust, vibration, and traffic. ▪ TCL has engaged with the RBDN since fall 2017 and maintains regular communications with the RBDN office.
District of Houston (Houston)	<ul style="list-style-type: none"> ▪ The District of Houston is located approximately 40 km southeast of the Project. Houston had a population of 2,993 in 2016. ▪ The governing council of Houston is comprised of a Mayor and six (6) Councillors. ▪ TCL has engaged with the District of Houston since spring 2019.

Notes: %=percent; km=kilometres; km²=square kilometers; Project=Tenas Project; TCL=Telkwa Coal Limited

Outside of local and regional governments, TCL engaged has also engaged with two (2) government or government-related entities, Northwest BC Resource Benefits Alliance and Work BC, the Member of the Legislative Assembly for Stikine, and the Member of Parliament for Skeena-Bulkley Valley.

1.4.2 Other Stakeholder Groups

In addition to the above-mentioned local and regional governments and elected officials, TCL has identified the following stakeholder groups as having an interest in or being potentially affected by the Project. These stakeholder groups have been engaged through various platforms including open houses, meetings, and email communications and include:

- ▶ **Local Community Stakeholders:** TCL has organized the local community into two (2) groups: the Tenas Mine Neighbours, and Bulkley Valley Residents. The Tenas Mine Neighbours consist of the 15 families with property and/or tenure in closest proximity to the Project. TCL felt it was important to create a neighbours' group to provide a dedicated forum for those with property and/or tenure in closest proximity to the Project, to receive Project information and ask questions, beyond the community open houses. Bulkley Valley Residents include those living in Village of Telkwa, Town of Smithers, and RBDN. TCL initiated engagement with the local community in Fall 2017. Conversations have taken multiple forms, including informal discussions and meetings, phone calls, letters, and emails. In addition to this engagement, TCL also hosted a community open house and a Tenas Mine Neighbours meeting within the early engagement phase (refer to Public Consultation Report [TCL 2020] for details);

- ▶ **Local Recreation Group Stakeholders:** include local commercial and non-commercial recreation groups such as: Back Country Horsemen of BC; Bulkley Valley Bowmen; Smithers Snowmobile Association; Upper Skeena Angling Guides Association (commercial); Guide Outfitters (commercial); Bulkley Valley Quad Riders, and the Bulkley Valley Rod and Gun Club. TCL began engaging with local recreation groups in spring 2017;
- ▶ **Local Community Group Stakeholders:** are local community interest groups such as the Bulkley Valley Community Resources Board, Skeena Watershed Conservation Coalition, Smithers Chamber of Commerce, Smithers Exploration Group, and Trout Creek Fish Hatchery TCL began engaging with local community interest groups in summer 2017;
- ▶ **Local Business Stakeholders:** there are a range of local businesses located in Smithers, Telkwa and Houston including industry, hospitality, service providers, retail and more. Many businesses have expressed an interest in learning more about how the Project could directly and indirectly affect the community as well as their operations. Many are also keen to understand what opportunities there are for their business and how they might be able to participate in the Project. To date, TCL has engaged with at least 19 local businesses. TCL began engaging with local business stakeholders in summer 2017 and will continue to engage with local businesses on the Project through public forums such as open houses as well as on contracting and procurement opportunities; and
- ▶ **Education Stakeholders:** include schools such as post-secondary institutions, training centres and organizations. There are seven (7) schools between Witset and Houston within School District 54 - Smithers and Houston each have one (1) secondary school, and there are five (5) elementary schools located in each smaller community or neighbourhood. Coast Mountain College is a local community college that has a campus in Smithers as well as online access throughout the northern region. Since 2017, TCL has engaged with Smithers Secondary, Bulkley Valley Learning Centre, Coast Mountain College – Smithers Campus, and the Bulkley Valley Museum.

2. PURPOSE

2.1 Purpose of Public Consultation

TCL's primary objective is to effectively communicate information about the Project and involve those who may be affected by or have an interest in the Project. In this spirit, TCL is committed to addressing issues and concerns of the local community and stakeholders. TCL is committed to creating and maintaining opportunities for constructive dialogue and relationships with local and regional stakeholders to develop the Project responsibly. As part of the Project's consultation, TCL is focused on engaging with the community throughout the Project, including Project development, to ensure feedback from the public is considered when planning the Project.

TCL's approved Public Consultation Plan (TCL 2019) was designed to achieve the following:

- ▶ Engage in early, frequent, open, and candid communication to build strong relationships with interested parties, particularly those who may be potentially affected by the Project;
- ▶ Communicate information in a timely, consistent manner to local community members, regulators, and stakeholders throughout the Project to build awareness of the Project, including potential effects and proposed mitigation measures;
- ▶ Identify and understand Project issues and concerns, as well as ensuring responsive engagement regarding stakeholder interests;

- ▶ Create and facilitate opportunities for the community and stakeholders to provide meaningful input and feedback on the Project;
- ▶ Respond to comments received on the Project and documents related to the EA process using tracking tables and other documentation methods;
- ▶ Foster strong, collaborative, and long-term partnerships with regulators, community groups, and other stakeholders; and
- ▶ Gather input and feedback on the Project from the local community and stakeholders and ensure it is considered during Project planning.

2.2 Purpose of the Public Consultation Report

Pursuant to the Section 11 Order, TCL is required to provide the BC EAO with a Public Consultation Report that is consistent with the approved Public Consultation Plan on file for the Project.

The Section 11 Order states that TCL must submit a Public Consultation Report to the Project Assessment Lead at the following times:

- ▶ Within 60 days after the close of a public comment period;
- ▶ At the time of submission of the Application for an Environmental Assessment Certificate (the EAC Application); and
- ▶ At any other time specified by the Project Assessment Lead.

The purpose of this second Public Consultation Report is to document TCL's consultation efforts from July 24, 2020 to February 22, 2022 when the EAC Application was submitted for screening.

3. PHASES OF PUBLIC CONSULTATION

An overview of TCL's phased approach to public consultation is presented in **Table 2**, and details are provided in the Public Consultation Plan (TCL 2019; available on the BC EAO's Electronic Project Information Centre [EPIC] website¹).

Table 2: Overview of Telkwa Coal Limited (TCL)'s Phases Approach to Public Consultation and Engagement

Phase	Overview	Timing/Status
Early Engagement Phase	<ul style="list-style-type: none"> ▪ The primary activities that occurred in the Early Engagement Phase are: <ul style="list-style-type: none"> ○ Early General Engagement Activities ○ Early Engagement Meetings ○ Open House ○ Tenas Mine Neighbours Group ○ Information Program 	Early 2017 to issuance of Section 10 Order in 2018 Complete

¹

https://projects.eao.gov.bc.ca/api/public/document/5d7bf27126583700218b983d/download/190913_TenasMine_PublicConsultationPlan_combined.pdf

Phase	Overview	Timing/Status
Pre-Application Phase	<ul style="list-style-type: none"> ▪ The primary activities that occurred in the Pre-Application Phase are: <ul style="list-style-type: none"> ○ Ongoing General Engagement Activities ○ Open Houses ○ Tenas Mine Neighbours Group Meetings ○ Information Program ○ Public Comment Period on the draft Application Information Requirements (AIR) <ul style="list-style-type: none"> ▪ Document Availability ▪ Response to Comments ○ Public Consultation Report(s) 	November 2018 – February 2022 Complete
Application Review Phase	<ul style="list-style-type: none"> ▪ The primary activities to occur in the application review phase are like those to be carried out during the Pre-Application Phase and include: <ul style="list-style-type: none"> ○ General Ongoing Engagement Activities ○ Open Houses ○ Tenas Mine Neighbours Group Meetings ○ Information Program ○ Public Comment Periods <ul style="list-style-type: none"> ▪ Document Availability ▪ Response to Comments ○ Public Consultation Report(s) 	March 2022 – ongoing Current
Post-EAC Engagement Phase	<ul style="list-style-type: none"> ▪ TCL is committed to creating and maintaining opportunities for constructive dialogue and relationships with the local community and other interested parties over the course of the Project. Should the Project be successful in receiving an Environmental Assessment Certificate (EAC), consultation and engagement post-EAC and prior to the Construction Phase of the Project and during the Operation Phase will include: <ul style="list-style-type: none"> ○ Open-Door Policy ○ General Engagement Meetings and Presentations ○ Company Website ○ Social Media ○ Site Tours ○ Participation at Community and Industry Events 	Post-decision Future phase

3.1 Pre-Application Phase

The first public consultation report (TCL 2020), documented TCL's consultation efforts from early 2017 to July 23, 2020 when the 45-day public comment period on the draft Application Information Requirements (AIR) ended. Therefore, many of the Pre-Application phase consultation and engagement activities outlined in **Table 2** above have been reported on in the first consultation report. As previously noted, the reporting period of this report is from July 24, 2020 through to submission of the EAC Application in February 2022.

Activities during the reporting period primarily consisted of:

- ▶ Ongoing general engagement activities;
- ▶ Consultation and engagement with the Tenas Mine Neighbours Group members; and

- ▶ Information Program.

There were no open houses during the reporting period.

3.1.1 Ongoing General Engagement Activities

The following summarizes ongoing general engagement activities that occurred during the reporting period. Many of these activities that have been ongoing since the early engagement phase:

- ▶ **Open-Door Policy** – TCL maintains an open-door policy at our local Telkwa office. Community members are encouraged to stop by the office to speak with team members (including the CEO), as well as view open house poster boards that are on display and other information materials;
- ▶ **Meetings and Presentations** – TCL is committed to continuous engagement with interested parties via in-person meetings, telephone calls, and emails to share Project information and ask Project-related questions;
- ▶ **Company Website** – Project updates and communication materials relevant to engagement are posted on the TCL website. The “Resources” page on the TCL website provides links to not only Project information, but also links to reports and memos available on the BC EAO’s EPIC site and is updated regularly as documents and Project information is available;
- ▶ **Social Media** – TCL posts regularly to our Twitter, Facebook and LinkedIn accounts. Content includes Project information and updates, community events, communication, and information materials. Community members can contact TCL directly with questions through the social media platforms. These messages often lead to a further exchange of information through email, phone calls, or face to face meetings;
- ▶ **Site Tours** – TCL continues to provide site tours for interested parties who wish to view key areas of where site development will occur;
- ▶ **Participation at Community and Industry Events** – TCL participated in several local community and industry events, including the Telkwa BBQ, Bulkley Valley Exhibition, Northwest Trade Expo, and Smithers Chamber of Commerce meetings; and
- ▶ **Sponsorship** – TCL sponsored several local organizations and activities, including establishing two (2) signature community events, a Family Skating Party on Family Day in February, and a Summer Kick-off BBQ in June. The list below outlines all the community groups we supported during the reporting period:
 - Bulkley Valley Bowmen;
 - Bulkley Valley Christian School;
 - Bulkley Valley Hospital Foundation;
 - Bulkley Valley Kinsmen (Telkwa BBQ);
 - Bulkley Valley Search and Rescue;
 - Bulkley Valley Youth Soccer;
 - Coast Mountain College;
 - Curling Club;
 - Dze L K’ant Friendship Centre in Houston and Smithers;
 - Kyah Wiget Education Society;
 - Northern Society for Domestic Peace;
 - Rotary Club of Smithers;
 - Salvation Army - Bulkley Valley;
 - Smithers Chamber of Commerce;
 - Smithers Child Development Center;

- Smithers Community Safety Office;
- Smithers Community Services;
- Smithers Exploration Group;
- Smithers Golf and Country Club;
- Smithers Rodeo Club (Bulkley Valley Exhibition);
- Smithers Senior Secondary School - Theatre Program;
- Smithers Volunteer Ski Patrol;
- The Ark Playday Centre in Telkwa;
- Telkwa Elementary School;
- Telkwa Museum;
- Telkwa Reading Room;
- Telkwa Volunteer Fire Department;
- Town of Smithers - Recreation Department; and
- Village of Telkwa.

In August 2020, TCL provided Community Interest Groups (i.e., Smithers Chamber of Commerce, Smithers Public Library, and Telkwa Reading Room) with a binder of Project information to be used as a resource available to the public.

In April 2021, an email update was sent out to stakeholder groups listed in **Table 3** as part of TCL's regular and ongoing engagement. The email notified the recipients that TCL was creating an inaugural newsletter and that it would be available by email and hard copy. Stakeholders were invited to subscribe to the newsletter at the TCL website. Stakeholders were also encouraged to look around the website as it is a resource for Project information and provides Project team contact information.

Table 3: Stakeholder Groups Contacted in April 2021

Stakeholder Group	
Airshed Management Society	Houston Chamber of Commerce
Back Country Horsemen of BC	Member of Parliament for Skeena-Bulkley Valley
British Columbia (BC) Steelhead Society	Member of the Legislative Assembly - Stikine
Bulkley Backcountry Ski Society	Northern Health Authority
Bulkley Valley Backpackers Society	Regional District of Bulkley-Nechako
Bulkley Valley Bowmen	Skeena Watershed Conservation Coalition
Bulkley Valley Christian School	Smithers Chamber of Commerce
Bulkley Valley Kinsmen	Smithers Exploration Group
Bulkley Valley Naturalists	Smithers Snowmobile Association
Bulkley Valley Quad Riders	Sport Fishing Angling Advisory Board
Bulkley Valley Research Centre	Tenas Mine Neighbours Group
Bulkley Valley Rod and Gun	Town of Smithers
Coast Mountain College	Upper Skeena Angling Guides Association
District of Houston	Village of Telkwa
Dze L Kant Friendship Center	What Matters in Our Valley
Fishing guides	Witset

In June 2021, TCL released the inaugural Community Update Newsletter that highlighted events and sponsorships, provided a link to the first Public Consultation Report, an update on where the Project was in the EA process, and included a local contractor/employee spotlight. Hardcopies of the newsletter were distributed via Canada Post to Telkwa postal codes and were also available in the TCL office. Electronic copies of the newsletter were distributed to those who signed up via the TCL website, and a copy was also posted to the TCL website. The Community Update Newsletter is provided in **Appendix B**.

In the fall of 2021, TCL shared a draft of the Public Access Management Plan (PAMP) with two (2) local hunters and two (2) local recreational users, both motorized and non-motorized experience of the area, to get their feedback on the plan. Comments and suggested revisions were received and incorporated into the draft PAMP that was submitted as part of the EAC Application.

3.1.2 Tenas Mine Neighbours Group

In consideration of COVID-19 and physical distancing guidelines there were no in-person meetings with the Tenas Mine Neighbours Group during the reporting period. However, TCL continued to share Project information with the members of the group via email, telephone, and via small meetings with individuals from the group.

In September 2020, the TCL Community Liaison, and a representative from DWB Consulting spent time with a member of the Tenas Mine Neighbours Group to tour the member's private property to understand where existing trails and travel routes are located prior to stream assessment field work for the proposed access road.

In October 2020 and January 2021, TCL's Community Liaison reached out to new residents in the Tenas Mine Neighbours Group as some properties had changed hands.

In January 2021, TCL shared the following Project information with members of the Tenas Mine Neighbours Group:

- ▶ Notification of upcoming activity on the Minesite in January and February;
- ▶ Copies of the Agricultural Land Reserve Application were shared with specific members for which it was applicable (i.e., applications are related to their land); and
- ▶ Notification regarding the 2021 Exploration Program.

Questions were received from the Tenas Mine Neighbours Group regarding the exploration program, how many water wells will be drilled and used for the Project, as well as the number of acres TCL will be clearing for the proposed exploration. TCL responded and clarified that drilling was being conducted to collect information about the seasonal elevation of ground water, not for water extraction. TCL also provided information regarding how much clearing was required for drilling and reclamation work would take place as part of the exploration program.

In April 2021, TCL had correspondence with Tenas Mine Neighbours Group members whose property is closest to the Rail Loadout and discussed cattle guards and other infrastructure. In May 2021, TCL's Community Liaison visited the property, gave a brief Project update, and shared maps and flagged the center line of the proposed Bypass Road crossing the Lawson Road for the Tenas Mine Neighbours Group member's reference.

July and August 2021, TCL's Community Liaison reached out to new residents in the Tenas Mine Neighbours Group as some properties have changed hands.

TCL is currently in discussions with affected neighbors regarding access and establishing a Land Use Agreement / Letter of Understanding related to the proposed Bypass Road / Tenas Access Corridor.

3.1.3 Information Program

TCL's Information Program is a three (3)-phase approach to share information with interested parties on various topics related to the Project, described below:

1. Phase 1 – Project and General Coal Bulletins (Early Engagement phase);
2. Phase 2 – Project-specific Infographics and Technical Briefs (Pre-Application phase); and
3. Phase 3 – Potential Seminar Speaker Series on Phase 2 topics (Application Review phase).

The first two (2) phases are discussed in the first Public Consultation Report (TCL 2020). During this reporting period the following infographics were completed and posted to the TCL website (<https://www.telkwacoal.com/site/resources>):

- ▶ About Coal;
- ▶ Mining and Reclamation; and
- ▶ About Selenium.

4. SUMMARY OF KEY ISSUES AND CONCERNS RAISED DURING PUBLIC CONSULTATION

A key part of community engagement is identifying and understanding community and interested parties Project concerns. In this spirit, TCL is committed to continuing to create and facilitate opportunities for the local community and interested parties to provide meaningful input and feedback on the Project. TCL documents Project-related consultation and engagement activities to ensure that the consultation process is accurately captured in reports that are submitted to regulators and as part of the EA process. TCL records relevant communications made through phone calls, emails, letters, and meetings. Records include details on who was present, the date and location of the consultation activity, and the purpose and outcomes of the discussions. Comments and responses to comments are tracked by TCL via a tracking table.

Table 3 provides a summary of public issues and concerns raised during the reporting period and TCL's response. Through extensive engagement with the local community and interested parties, TCL has identified these issues and will consider these in the EAC Application.

Table 4: Summary of Public Issues and Concerns Raised During Public Consultation and Telkwa Coal Limited's (TCL's) Responses, July 24, 2020 to February 22, 2022

Topic	Stakeholder Group	Public Issues / Concerns	Status of the Issue and Summary of TCL's Response
Open House Format	Local Recreation Group	Provided feedback on the virtual Open House in June 2020 and did not enjoy the presentation or the format. Would prefer an in-person Open House going forward.	TCL's preference is also to have in-person meetings however, a virtual meeting was required due to COVID-related restrictions on gatherings. If COVID restrictions are lifted the next open house will be in-person.
Section 11 Order	Local Community Group	Request to have Luutkudziwwus added to the Section 11 Order.	Luutkudziwwus would need to approach the BC EAO if they would like to be added to the Section 11 Order. TCL is committed to the

Topic	Stakeholder Group	Public Issues / Concerns	Status of the Issue and Summary of TCL's Response
			environmental assessment process and respects any orders provided by the BC EAO. TCL offered to meet to provide additional Project Information if Luutkudziwus is interested.
Exploration Program	Tenas Mine Neighbours Group	How many water wells will be drilled and used for the exploration program, how many acres TCL will be clearing for the proposed exploration.	TCL clarified that drilling was being conducted to collect information about the seasonal elevation of ground water, not for water extraction. TCL also provided information regarding how much clearing was required for drilling and reclamation work would take place as part of the exploration program.
ALR and Rezoning Applications	Tenas Mine Neighbours Group	Some members of the group requested that copies of all applications that TCL submits related to their land.	TCL shared the information requested.

Notes: ALR=Agricultural Land Reserve; BC EA=British Columbia Environmental Assessment Office; TCL=Telkwa Coal Limited

5. NEXT STEPS

TCL is committed to creating and maintaining opportunities for constructive dialogue and relationships with the local community and other interested parties over the course of the Project. TCL will implement the future activities outlined in the Public Consultation Plan (TCL 2019), including public review of the EAC Application and continued community engagement during different phases of the Project (Construction, Operation, Decommissioning and Reclamation, and Post-closure phases), as well as compliance and enforcement activities as needed.

5.1 Application Review Phase

The Application Review Phase is initiated upon acceptance of the EAC Application for review by the BC EAO. TCL is committed to continuing consultation and engagement over the course of the Project to communicate details on the proposed Project, the potential effects, proposed mitigation measures, and to seek feedback from the local community and interested parties on the EAC Application submitted for the Project to the BC EAO.

The primary activities to occur in the Application Review Phase will be similar to those carried out during the Pre-Application Phase and include:

- ▶ Ongoing Engagement Activities;
- ▶ Open House(s);
- ▶ Tenas Mine Neighbours Group Meetings;
- ▶ Information Program;
- ▶ Public Comment Periods:

- Document Availability;
- Response to Comments; and
- Public Consultation Report - per the Section 11 Order, the next report will be submitted 60 days after the close of the public comment period.

As the Project progresses, TCL will continue to employ engagement strategies that promote effective communication and relationship-building as outlined in the Public Consultation Plan (TCL 2019).

6. REFERENCES

Government of British Columbia. 2002. *Environmental Assessment Act*. SBC. 2002, c. 43. Available at: <https://www.bclaws.gov.bc.ca/civix/document/id/complete/statreg/18051>.

Telkwa Coal Limited. 2019. Tenas Project Public Consultation Plan. Available at: https://projects.eao.gov.bc.ca/api/public/document/5d7bf27126583700218b983d/download/190913_TenasMine_PublicConsultationPlan_combined.pdf.

Telkwa Coal Limited. 2020. Tenas Project Public Consultation Report. Available at: https://projects.eao.gov.bc.ca/api/public/document/6079ade55cbabe00229f593e/download/210415_TenasMine_PublicConsultationReport_Final_WithAppendixB.pdf.

Appendix A Interested Parties

Table A-1: Interested parties identified since 2017

Regional and Provincial Government
BC Environmental Assessment Office
BC Ministry of Agriculture
BC Ministry of Energy, Mines and Low Carbon Innovation
BC Ministry of Environment and Climate Change Strategy
BC Ministry of Forests, Lands, Natural Resource Operations and Rural Development
BC Ministries of Jobs, Trade and Technology
BC Ministry of Municipal Affairs and Housing
BC Ministry of Transportation and Infrastructure
BC Agriculture Land Commission
Northern Health
Provincial Member of Legislative Assembly for Stikine
Federal Government
Canadian Environmental Assessment Agency (now Impact Assessment Agency)
Environment and Climate Change Canada
Federal Member of Parliament for Skeena-Bulkley
Natural Resources Canada
Transport Canada
Local Governments
Village of Telkwa
Town of Smithers
Regional District of Bulkley-Nechako
District of Houston
Other Government Entities
BC Hydro
Northwest BC Resource Benefits Alliance
Work BC
Local and Regional Community
Tenas Mine Neighbours Group
Bulkley Valley Residents (includes residents of the Village of Telkwa, Town of Smithers, and Regional District of Bulkley Nechako).
Recreation Groups
Bulkley Valley Backpackers
Bulkley Valley Bowmen
Bulkley Valley Intensive Motorized Association
Bulkley Valley Quad Riders
Bulkley Valley Rod and Gun Club
Northwest Chapter Back Country Horsemen of BC
Smithers Snowmobile Club
Upper Skeena Angling Guide Association
Guide outfitters (commercial)
Local Trapline Holders (commercial)

Community Interest Groups
Bulkley Valley Community Resources Board
Bulkley Valley Lakes District Airshed Management Society
Bulkley Valley Museum
Bulkley Valley Research Centre
Education Providers (Coast Mountain College, Bulkley Valley Learning Centre, School District 54 Bulkley Valley, Smithers Secondary School, Telkwa Elementary School, Muheim Elementary School)
Local Businesses
Skeena Watershed Conservation Coalition
Smithers Chamber of Commerce
Smithers Exploration Group
Telkwa Museum
What Matters in our Valley
Industry
Canadian National Railway
West Fraser Timber Company (Pacific Inland Resources)
Pacific Northern Gas Ltd
Ridley Terminals Inc.

Appendix B

Newsletter

JUNE 2021



TELKWA COAL
LIMITED

COMMUNITY UPDATE

COVID-19

We have seen many examples of our community coming together to support one another these past 15 months as we collectively navigate the challenges brought about by COVID-19. We will emerge from this pandemic stronger and more resilient than before.



TCL is pleased to partner with the Back Country Horsemen (Northwest Chapter) who have converted the old Core Shack area into their "Coalmine Camp".



To date, we have contributed over \$11 million to the regional economy with spending on local contractors as well as government payments.



TCL partnered with Raven Rescue to supply the volunteer ski patrol with hypothermia equipment.

COMMUNITY RESILIENCE

For Telkwa Coal, we believe resiliency is about how we consider the social, economic and environmental factors in our actions and decisions.

From a social perspective, it is about ongoing and respectful relationships with the Wet'suwet'en and local communities. This is by listening and doing our best to address concerns. It is also about supporting the most vulnerable in our community and the causes that matter to all of us.

And, once operating, it is always keeping the health and safety of our employees and the community well-being top-of-mind.

Economically, building resilience is about having an operation that can weather the storms of economic cycles. That means building our mine in a way that ensures that we can manage these fluctuations and maintain our skilled workforce. It also means hiring and procuring locally, just as we have done so far.

For us, responsible mining means the environment is the highest priority. How we operate, manage the land and water we use is carefully planned and considered, and our responsibility is to minimize any effects we may have. When mining is complete, we will rehabilitate the land with the goal of establishing forest ecosystems for wildlife habitat, recreation, forest harvest in suitable areas, and traditional land uses.

We believe that our project can support community resiliency by contributing to a diversified economy, strengthening the social fabric by providing local jobs for local people while operating in a safe and environmentally responsible manner. This is our commitment to you. We believe we can and are doing this, and we thank our friends and neighbours for this opportunity.

EVENTS & SPONSORSHIP

At Telkwa Coal, we remain deeply committed to supporting local non-profit organizations that are working hard to provide services and much-needed support to the communities of the Bulkley Valley.



Local Contractor/Employee Spotlight

LORIE FARRELL B. Sc., P. Geo.

Contractor, Exploration Project Supervisor and Mine Manager

Responsible for managing the field components of the Tenas drill programs, 2018-2021.

Lorie graduated from the University of Saskatchewan, has over two decades experience in the mineral industry in Canada as a Senior Geologist and Exploration Manager, and works on various exploration projects in the Bulkley Valley.

Her career has focused on project management, organizing, and overseeing various levels of exploration programs - while ensuring proper permitting and environmental protocols are followed.

You may recognize her from local events in the region with her work through the Smithers Exploration Group, promoting a love of geology and rocks. Lorie and her family have made the Bulkley Valley their home since 2007.



ENVIRONMENTAL ASSESSMENT (EA) PROCESS

The Tenas Project is steadily progressing through the EA Pre-Application Process, reaching a number of key milestones in 2020. The EAO hosted two virtual Open Houses in July 2020 on a key EA deliverable called the draft Application Information Requirements (dAIR). This document outlines the structure of the information required for the EA Application.

PUBLIC CONSULTATION

TCL's Public Consultation Report at 276 pages can be found on this link:

https://www.projects.eao.gov.bc.ca/api/public/document/6079ade55cbabe00229f593e/download/210415_TenasMine_PublicConsultationReport_Final_WithAppendixB.pdf

We continue to work through various aspects of our EA Application and aim to submit to the EAO in 2021.



Water is a vital resource and a critical part of the fabric that binds and supports our communities in the Bulkley Valley.

At Telkwa Coal, we believe that healthy water quality and quantity are fundamental. We also believe that every component selected for assessment in our EA application is valuable and important - from water to wildlife and everything in between.

In response to feedback from the OW and the public, we looked at the use of the terms Valued Components (VC) and Intermediate Components (IC). To clarify our commitment to the importance of each and every component, we have put aside the technical differentiation and are using Valued Components only.

We hope this streamlined approach will provide a greater confidence in the effects assessment process and outcomes.



The EAO Working Group consists of federal, provincial, local government and Wet'suwet'en representatives to assist the EAO with reviewing and providing feedback on the Tenas Project's EA Application.